

A black and white photograph of a wheat field. The wheat stalks are in focus, showing the texture of the grain and the awns. The background is slightly blurred, creating a sense of depth. Overlaid on the image is a logo consisting of the letters 'DO' stacked above 'HO' in a bold, sans-serif font, enclosed in a rounded square border.

**DO
HO**

Flasher Installation



Index

INTRODUCTION	2
Composition of the Flasher.....	2
INSTALLATION	3
Software installation.....	3
First use and updates.....	4
FUNCTIONS	5
How to configure the file exchange system.....	5

2 INTRODUCTION

Composition of the flasher



There follows the list of all components with their codes.

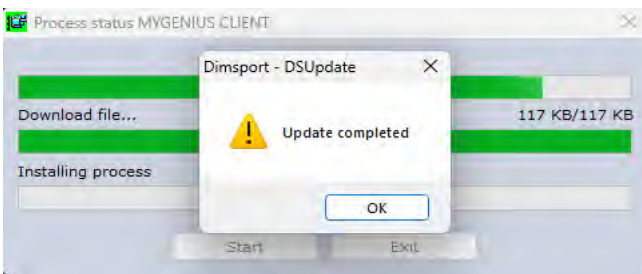
REF	CODE	DESCRIPTION
1	F32MYGENIUS	DoHo Flasher
2	F32XXXX	Specific cable depending on vehicle type (Consult our support@doho-flascher.com to find out wich cable you need)
3	C32GNUUSB01	USB-cable

Software installation

1. Download the installation Set Up at the following address:
2. <https://doho-flascher.com/>
3. Run the setup and follow the guided installation procedure:



Use installation directory suggested by the software itself and then select installation language.



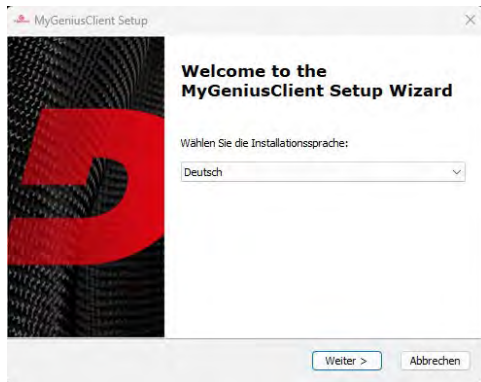
The software is now correctly installed and ready to be used.

First use and updates

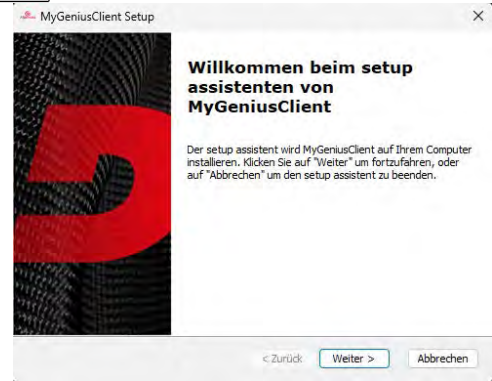
1. Connect DoHo-Flascher to the PC..

The PC will start the driver installation procedure for the Flasher device.
Please follow the steps in order to install properly the device.

1

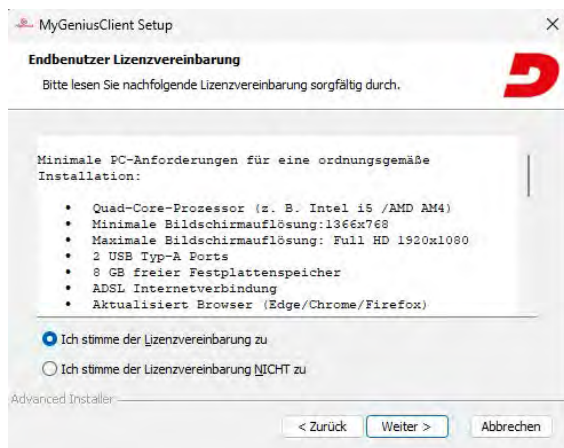


2

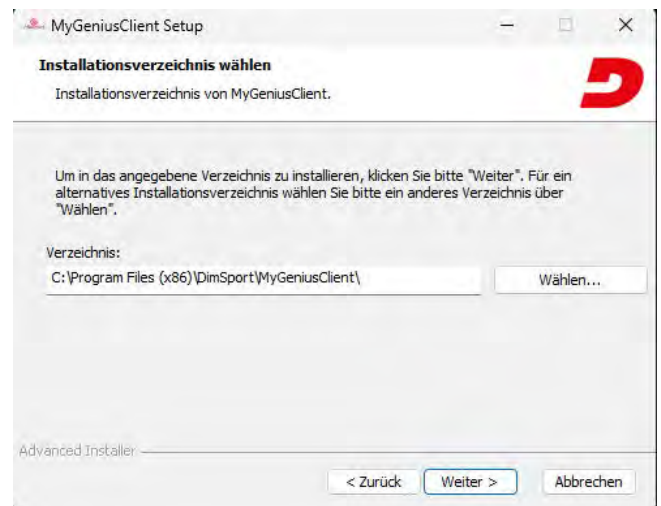


At the end of the procedure, it is possible to start My Genius Client.
When the software starts to run, a mandatory update is requested..

3



4



Once the mandatory update has been completed, the software and the instrument are correctly set up and you are ready to start working.

Connect DoHo-Flascher to the vehicle's diagnostic socket using the dedicated cable.

The vehicle's diagnostic port is often located under the steering wheel but, depending on the brand/model/type, it may be found in a different location.



Never connect the unit simultaneously to the USB port of the PC and to the vehicle diagnostic socket to perform read/write operations!

4 FUNCTIONS

How to configure the file exchange system

1. Select the OPTIONS item from the File menu



2. Select the option for the file exchange

